

Architecture

ARCHITECTURE | INTERIORS | LANDSCAPE

UPDATE AU



Dazzling Designs

Haute Trends to Rejoice the Season with Style





The interiors of the **The Plus House, Panipat, Haryana**, designed by **Studio An-V-Thot Architects Pvt. Ltd.**, is a mix of modern as well as traditional aspect of design. The volumes and voids forming the face of the house are a result of interior space planning and layout. The circulation pattern gives rise to a dramatic story within and beyond.



In the year 2009, Architect **Ankita Sweety & Pratyoosh Chandan** initiated "Studio An-V-Thot Architects Pvt. Ltd." a Design Consultancy firm in Delhi. Since then the studio has taken up and completed several Architectural and interior projects of varied nature, scale and sizes. Ankita Sweety graduated with a distinction in her Architectural Degree

from NIT Patna and during the course, also won numerous National and State level Design Contests of repute. Since then she was associated with one of the leading design firms in New Delhi for two years. She is also a Visiting Faculty at an Architecture College in Gurgaon. Apart from that she confidently holds the post of country's editing member for World Architecture Community Pratyoosh Chandan, after graduating in Architectural Technology & Construction Management from Rai University, worked with an established firm in Delhi for three years wherein he led various design projects of diverse nature. He then went to UK to further pursue his architectural critique, from University of Brighton, UK. Thereafter he co-created Studio an-v-thot with Ankita to provide design solutions.

Text: courtesy, the designer; photo credits: Saptorshi Majumdar

A Touch of Opulence

The Plus House, Panipat, Haryana, India
Studio An-V-Thot Architects Pvt. Ltd.

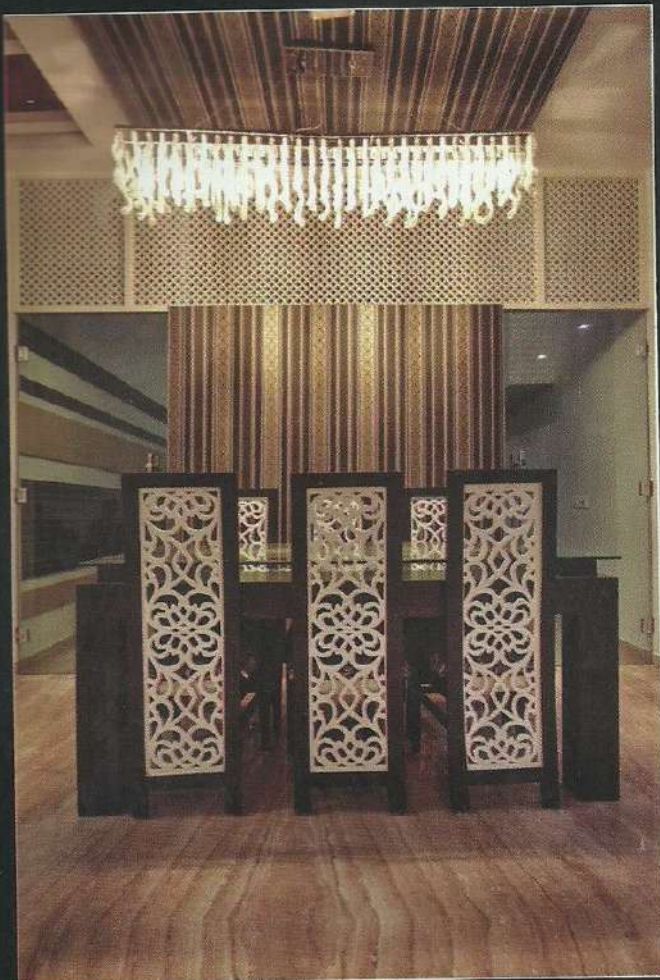
The Plus House located at Panipat, Haryana, designed by Studio An-V-Thot Architects Pvt. Ltd, was perceived as a creation of rectangles within a square, which clearly took the designers to benefitting proportions during the planning. This was the answer to a rather questionable site which sat on an almost square plot 55' x 58', thus generating a challenge as well as curiosity to achieve a depth of travel and sight.

The façade of the 25' high structure can be seen as volumes and voids sharing spaces, overlapping and inter-changing their behaviour as well as presence. The vertical edge of the corner is sliced open in a tapered hugging manner with MS pergola on the roof level adding the play of shadows & light. Insertion of MS Jali is eminent at various places. Use of sober orange textured paint balances its harmony through the cladding of Dholpur stone on to the left tower. Compressed laminate sheets in exposed wooden grains add to the material palette.

The interiors of the house can be seen as a mix of modern as well as traditional aspect of design evolving in the contemporary India. The circulation pattern gives rise to a dramatic story within and beyond,



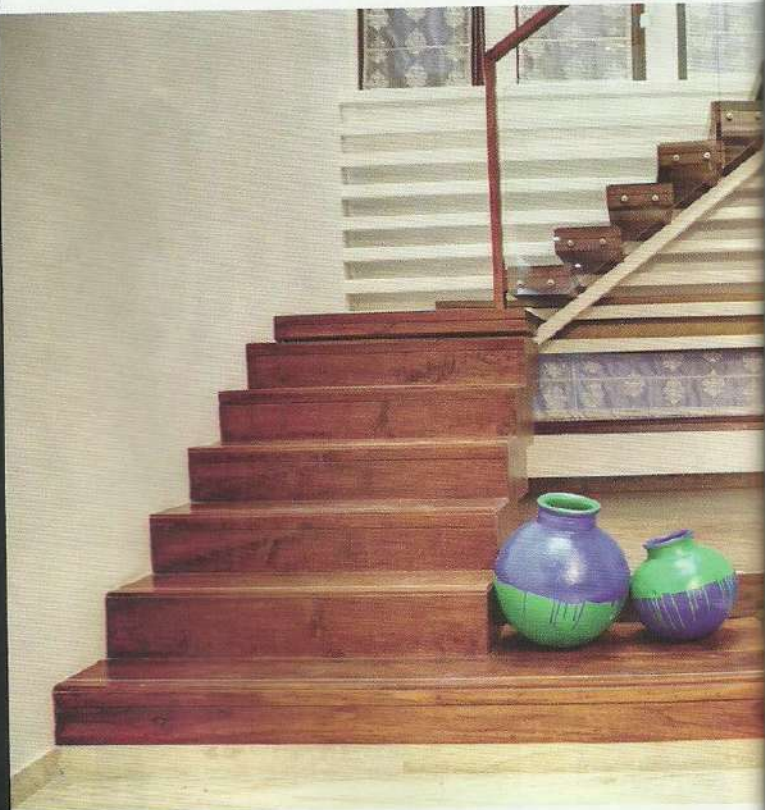
untold everyday of existence. The whole house catering to a small family of four revolves around and about a dense green focal point; the impact of the so created courtyard can be felt from the entrance as well as the private areas of the house. Here, the 'plus' is actually two axes



custom designed lighting and furniture in the dining area



the volumes and voids creating interesting patterns



the staircase and the tastefully designed spaces

which generated 4 rectangles within a square that goes from end to end of the plot. This in turn leads to a comfortable travel of air and natural light throughout the house.



The courtyard has a sunken pebble bed with glass top, which acts as a stage hosting the court. Italian stone "Diana" has been used throughout the flooring, with its grains leading to the court. Wooden flooring is also used at places to add warmth. A lot of sit-outs have been planned and placed at various intervals within the house to add story. Extensive use of jali can be seen as partitions which are then repeated in furniture as well. The ceiling of the lobby leading to the court is finished with veneer backed by commercial board which follows through the glimpses of backlit onyx stone in Puja, sea green lacquered glass in kitchen, as well as a wall of wallpaper in the dining. Traditional



a play of browns and off whites in the bedroom



the first floor lobby



inserts can be seen in the rear door leading to the backyard which overlooks the coffee corner through the double height where the "Palm" reaches its footstep. The backyard hosts a small shower pool adjoining the garden.

A small bar sits as a vertical extension to the drawing room at the mezzanine level with a small pantry, a washroom and a private balcony. This area is enclosed with a lot of backlit onyx stone, white PU pigment paint and dark veneer where green fabric on the furniture adds youthfulness. The master bedroom and the children's bedroom are designed to evolve as two characters with former being warm and the latter being young. The master bedroom has a play of browns and off-whites added by Victorian wallpaper and neo-Victorian wall lights as well as a chandelier. The raised study in the children's room has a glossy pigment

paint with pastel green laminate adding to the blue and white pin-up board. The same colour palette is repeated on the rug and curtains.

Plenty of hanging lights and custom-designed ceiling lights have been used throughout the house adding glamour and warmth. The threshold between the ground and the first floor has a four paneled false wall water-painted with a splash of multiple colours by the designers themselves. Altogether it's a house with spaces of varying identities yet similar character. ▲

fact file:

<i>project</i>	: <i>The Plus House</i>
<i>location</i>	: <i>Panipat, Haryana</i>
<i>client</i>	: <i>Payal and Vinod Juneja</i>
<i>design team</i>	: <i>Studio An-V-Thot Architects Pvt. Ltd.</i>
<i>completion date</i>	: <i>March 2014</i>
<i>built-up area</i>	: <i>3,650-sq ft</i>
<i>photo credits</i>	: <i>Saptorshi Majumdar</i>



custom designed kids room; furniture adding to the youthfulness



green furniture at the bar lounge



the kitchen